

ZTE Mobile Internet Product



ZTE 4G Wireless Router MF286R

Product Description

2020-11-05

1 Product Overview



MF286R is a 4G Wireless Router that can provide both LTE CAT6 high speed data service to home users or business users. With a sleek upright design, the MF286R supports data downlink speeds of 300 Megabits per second, and 50Mbps for uplink, delivering high-speed mobile internet access for up to 32 users simultaneously. With the runway design, MF286R is a stylish addition to your desks.

Meeting the needs of customers all over the world, MF286R support a broad range of LTE spectrum used in different markets globally. Support for external antenna will allow the MF286R to be deployed in areas of poor mobile signals.

2 Features

- FDD/TDD/UMTS/GSM multi-mode
- LTE CAT6, DL/UL 300/50Mbps
- Global band configuration
- Wi-Fi 802.11 b/g/n, up to 450Mbps
- 32 Wi-Fi users
- WPA/WPA2 and WPS
- Firewall
- IPV4/IPV6
- VPN pass through
- Optional external antennas
- Fota
- All mainstream browser
- WebUI & APP

3 Technical Specifications

3.1 Hardware Specification

Item	Description	
Technical standard	WAN	FDD-LTE/TDD-LTE/DC-HSPA+/HSPA+/HSPA/UMTS/EDGE/GPRS/GSM
	LAN	IEEE 802.3/802.3u
	WLAN	IEEE 802.11b/g/n
Working frequency band	LTE	FDD LTE Band 1,3,8 TDD LTE Band 40
	DC-HSPA+/HSPA+/HSPA/UMTS	Band 1
	EDGE/GPRS/GSM	Band 3,8
	WLAN	2.4GHz
Antenna	Antenna type	Built-in LTE/UMTS/GSM antenna Built-in WLAN 2.4GHz antenna
	LTE antenna gain	698-960MHz: 0.5dBi 1710-2700MHz: 2.5dBi
External port	4 x RJ45 (GE, 1 x WAN/LAN, 3 x LAN) 1 x SIM Slot (2FF); 2 x SMA (External Antenna) 1 x DC470 (12V DC Power supply) 1 x USB-A(Factory Test)	
Indicator	1 x Power (Blue) 1 x Wi-Fi(Blue) 1 x SIM(Blue) 1 x Network(3 color) 5 x Signal (Blue)	
Button	1 x Power Switch 1 x Reset button 1 x WPS button 1 x Wi-Fi Switch	
Maximum Tx power	LTE	23+/-2.7 dBm
	Wi-Fi	20dBm 11b 16dBm 11g 15dBm 11n
Power Supply	Rated voltage: 12V DC±10% Rated current: 1.5A	

	Input voltage: 100V~240V, 50Hz~60Hz
Dimension	180(H) x 170(W) x 30mm
Weight	About 450 gram
Environment	Operating temperature: -20 to 60° C Storage temperature: -40 to 70° C Humidity: 5%~ 95%

3.2 Carrier Aggregation and MIMO

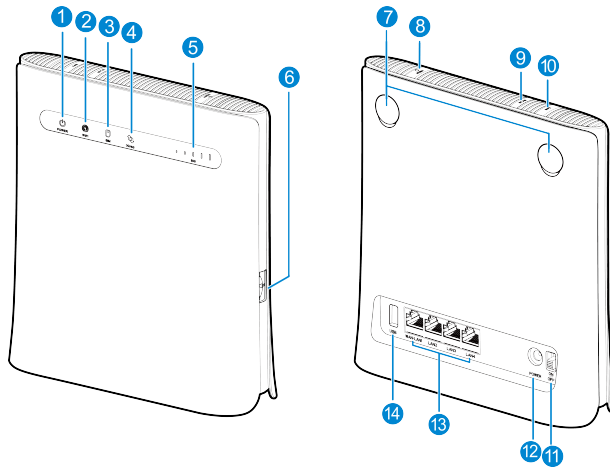
Item	Description
DL 2CA	1C 1A-3A 1A-8A 3C 3A-3A 3A(Primary)-8A(Secondary)

3.3 Software Specifications

Item	Description		
Cellular Data Service	FDD-LTE	LTE CAT6 DL/UL 300/50Mbps	
	TDD-LTE	LTE CAT6 DL/UL 220/10Mbps	DL/UL ratio 3:1
	UMTS	HSDPA CAT 24 HSUPA CAT 6 DL/UL 42/5.76Mbps	
	EDGE	Multi-slot Class 12 UL/DL 236.8kbps	
	GPRS	Multi-slot Class 10 UL 80kbps /DL 40kbps	
Wi-Fi	MIMO	2.4GHz 3x3	
	Data Rate	2.4GHz 450Mbps	
	Max. Client	32 users	
	WPS	PBC(Push Button Config) & Station PIN	
	Security	WPA-PSK/WPA2-PSK	
Management	WebUI		

	App for Android and iOS TR069
Brower	IE (7.0 and later) Firefox (3.0 and later) Safari (4.0 and later) Opera (10.0 and later) Chrome (10.0 and later)
Router Function	Port forwarding IP filter DMZ UPnP VPN passthrough
Other Function	SMS (Via WebUI) Phonebook (Via WebUI) IPV4/IPV6 On line Upgrade (Fota)

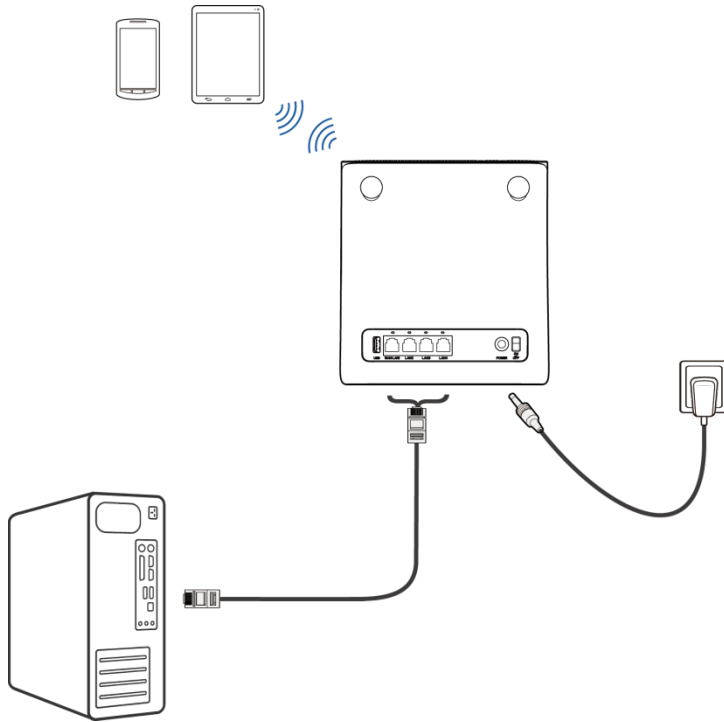
4 Interface Description



1	POWER Indicator
2	WIFI Indicator
3	SIM Indicator
4	3G/4G Indicator
5	SIG Indicator
6	(U)SIM card slot
7	External antenna ports
8	RESET hole
9	WLAN key
10	WPS key
11	ON/OFF switch
12	POWER port
13	LAN ports
14	USB port

5Application Scenario

MF286R accesses the LTE network and provides the data service for the users via Wi-Fi and LAN .



6 Packing List

The follow table shows the devices and accessories

Table Packing list

Item	Quantity
Wireless Router	1
AC adapter	1
Quick guide	1
Warranty card	1